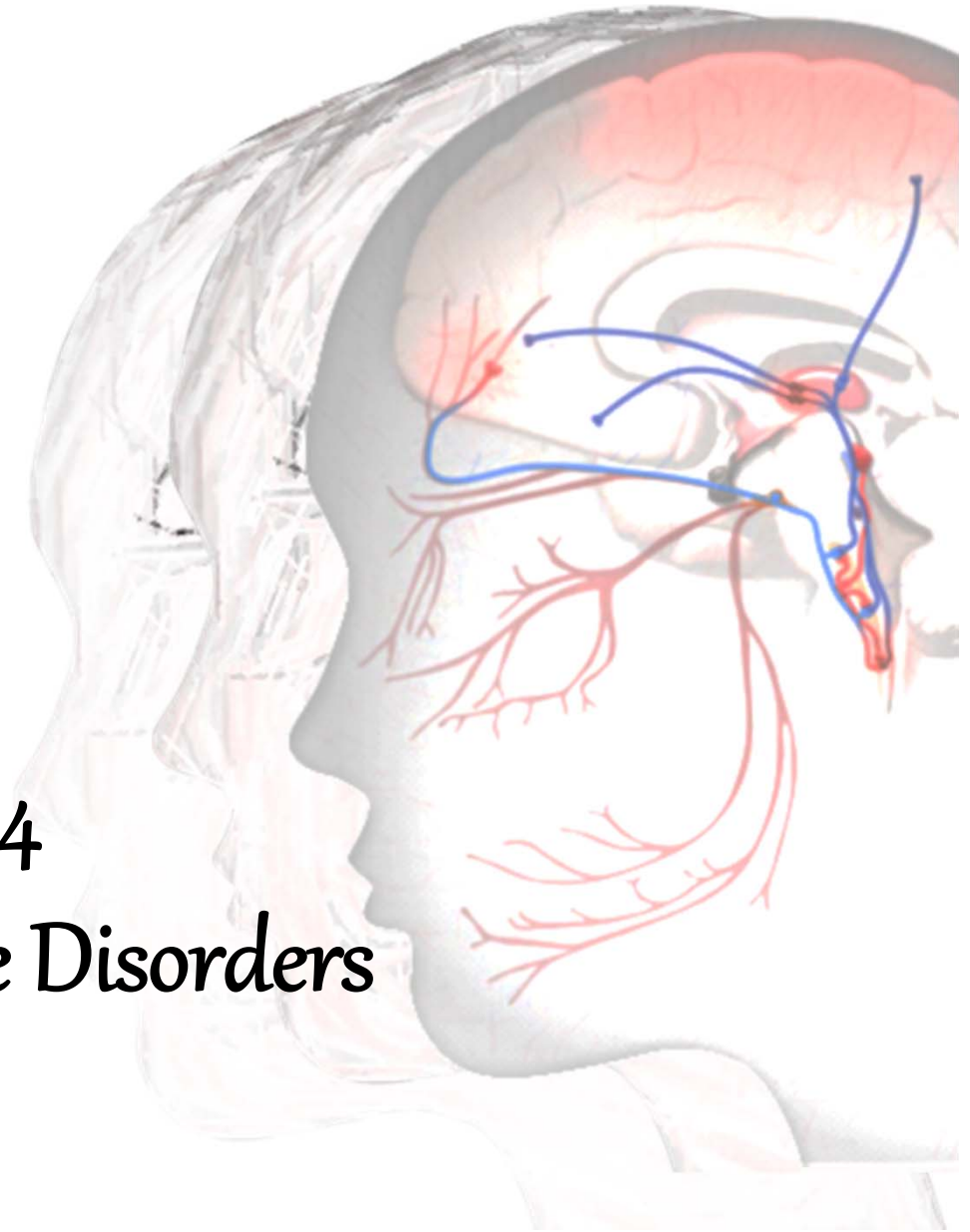


1CHD-III (beta) Chapter 4

Other Primary Headache Disorders

Shuu-Jiun Wang, M.D.

Department of Neurology, The Neurological Institute, Taipei Veterans General Hospital
& National Yang-Ming University School of Medicine, Taipei, Taiwan



What is new for chapter 4: other primary headache

- Re-arrangement and rename of diagnostic entities
- 4 major groups
- Schema for definite criteria
- Schema for “probable”...headaches

ICHD-2



ICHD-3 (beta)

- 4.1 Primary stabbing headache
- 4.2 Primary cough headache
- 4.3 Primary **exertional** headache
- 4.4 Primary headache associated with sexual activity
- 4.5 Hypnic headache
- 4.6 Primary thunderclap headache
- 4.7 Hemicrania continua**
- 4.8 New daily-persistent headache (NDPH)

- 13.10 External compression headache**
- 13.11 Cold-stimulus headache**

- A13.7.1 Nummular headache**

3.4 Hemicrania continua

- 4.1** Primary cough headache
- 4.2** Primary **exercise** headache
- 4.3** Primary headache associated with sexual activity
- 4.4** Primary thunderclap headache

4.5 Cold-stimulus headache

- 4.6** External-pressure headache
- 4.7** Primary stabbing headache

4.8 Nummular Headache

- 4.9** Hypnic headache
- 4.10** New daily persistent headache (NDPH)

A4.11 Epicrania Fugax

4 major groups

Physical exertion

- 4.1 Primary cough headache
- 4.2 Primary exercise headache
- 4.3 Primary headache associated with sexual activity
- 4.4 Primary thunderclap headache

Direct physical stimuli

- 4.5 Cold-stimulus headache
- 4.6 External-pressure headache

Epicranial headaches

- 4.7 Primary stabbing headache
- 4.8 Nummular Headache
- A4.11 Epicrania Fugax

Others

- 4.9 Hypnic headache
- 4.10 New daily persistent headache (NDPH)

Format for definite criteria

- Diagnostic schema for “definite” criteria as chapters 1-3
 - A. At least 2 episodes
 - B. Brought on by and occurring only in association with..
 - C. Headache pattern
 - D. Not accounted for by another ICHD-III..
(secondary headache should be excluded especially for “other primary headache”)

4.1 Primary cough headache

- A. At least two headache episodes fulfilling criteria B-D
- B. Brought on by and occurring only in association with coughing, straining and/or other Valsalva manoeuvre
- C. Sudden onset
- D. Lasting between 1 sec and 2 hours
- E. Not better accounted for by another ICHD-III diagnosis.

Format of diagnostic criteria for “Probable” other primary headaches

- A. Either of the following:
 - 1. a single headache episode fulfilling criteria B-D
 - 2. at least two headache episodes fulfilling criterion B and either of criteria C and D

B-D. Headache characteristics

- E. Not fulfilling ICHD-III criteria for any other headache disorder
- F. Not better accounted for by another ICHD-III diagnosis.

4.1.1 Probable primary cough headache

- A. Either of the following:
 - 1. a single headache episode fulfilling criteria B-D
 - 2. at least two headache episodes fulfilling criterion B and either of criteria C and D
- B. Brought on by and occurring only in association with coughing, straining and/or other Valsalva manoeuvre
- C. Sudden onset
- D. Lasting between 1 second and 2 hours
- E. Not fulfilling ICHD-III criteria for any other headache disorder
- F. Not better accounted for by another ICHD-III diagnosis.

Primary cough headache

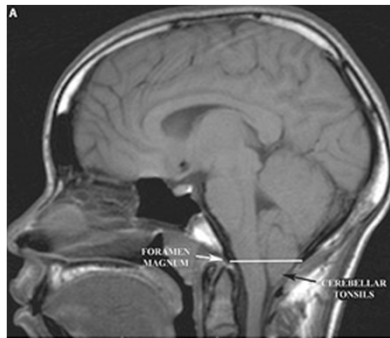
ICHD-2 code 4.2

- A. Headache fulfilling criteria B and C
- B. Sudden onset, lasting from one second to 30 minutes
- C. Brought on by and occurring only in association with coughing, straining and/or Valsalva manoeuvre
- D. Not attributed to another disorder

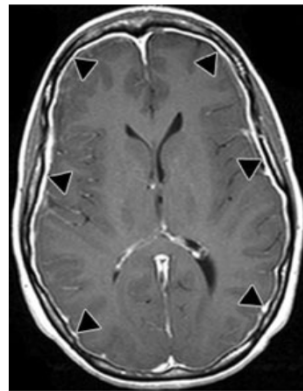
ICHD-3 (beta) code 4.1

- A. At least **two** headache episodes fulfilling criteria B-D
- B. Brought on by and occurring only in association with coughing, straining and/or other Valsalva manoeuvre
- C. Sudden onset
- D. Lasting between **1 sec and 2 hours**
- E. Not better accounted for by another ICHD-III diagnosis.

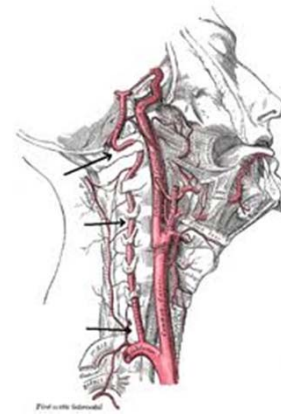
Secondary causes of cough headaches



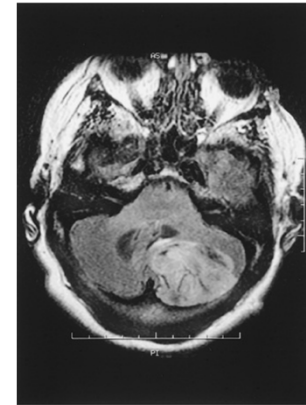
Chiari malformation I



SIH



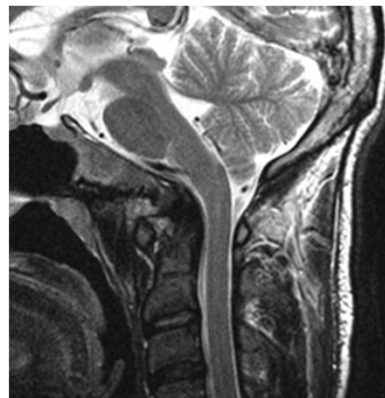
Cervical artery
dissection



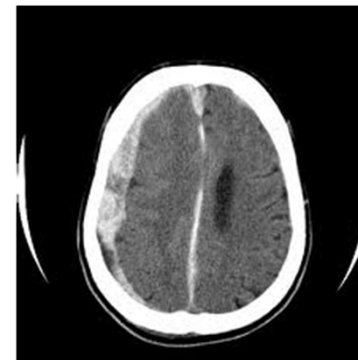
Posterior fossa tumor



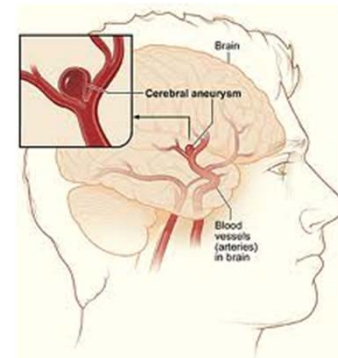
Basilar impression



Platybasia



Subdural hematoma



Cerebral aneurysms

4.2 Primary exercise headache

- A. At least **two** headache episodes fulfilling criteria B and C
- B. Brought on by and occurring only during or after strenuous physical exercise
- C. Lasting **< 48 hours**
- D. Not better accounted for by another ICHD-III diagnosis.

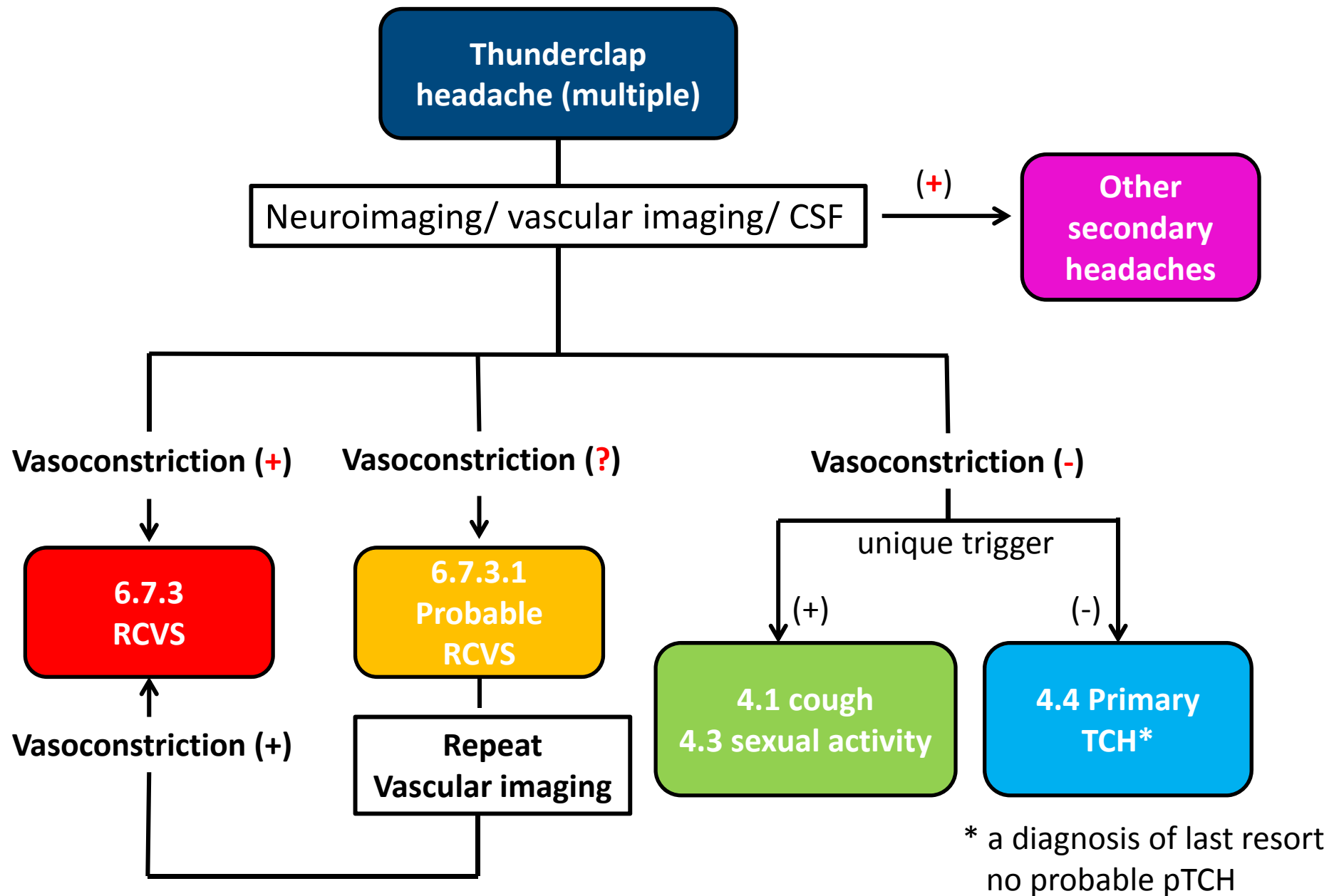
4.3 Primary headache associated with sexual activity

- A. At least **two** episodes of pain in the head and/or neck fulfilling criteria B-D
- B. Brought on by and occurring only during sexual activity
- C. Either or both of the following:
 - 1. **increasing in intensity with increasing sexual excitement**
 - 2. **abrupt explosive intensity just before or with orgasm**
- D. Lasting from **1 minute to 24 hours with severe intensity** and/or **up to 72 hours with mild intensity**
- E. Not better accounted for by another ICHD-III diagnosis.

Note: 1. No more subtypes: ~~Preorgasmic~~ ~~Orgasmic~~
2. Vascular lesions esp. RCVS should be excluded first

4.4 Primary thunderclap headache

- A. Severe head pain fulfilling criteria B and C
- B. Abrupt onset, reaching maximum intensity in <1 minute
- C. Lasting for **at least 5 minutes**
~~— Does not recur regularly over subsequent weeks~~
~~— or months~~
- A. Not better accounted for by another ICHD-III diagnosis.



4.5 Cold-stimulus headache

4.5.1 Headache attributed to **external application** of a cold stimulus

4.5.2 Headache attributed **to ingestion or inhalation** of a cold stimulus

4.5.3 Probable cold-stimulus headache

4.5.3.1 Headache probably attributed to external application of a cold stimulus

4.5.3.2 Headache probably attributed to ingestion or inhalation of a cold stimulus

4.6 External-pressure headache

4.6.1 External-compression headache

4.6.2 External-traction headache

4.6.3 Probable external-pressure headache

4.6.3.1 Probable external-compression headache

4.6.3.2 Probable external-traction headache

4.7 Primary stabbing headache

- A. Head pain occurring spontaneously as a single stab or series of stabs and fulfilling criteria B–D
~~Exclusively or predominantly felt in V1~~
- B. Each stab lasts for up to a few seconds
- C. Stabs recur with irregular frequency, from one to many per day
- D. No cranial autonomic symptoms
- E. Not better accounted for by another ICHD-III diagnosis.

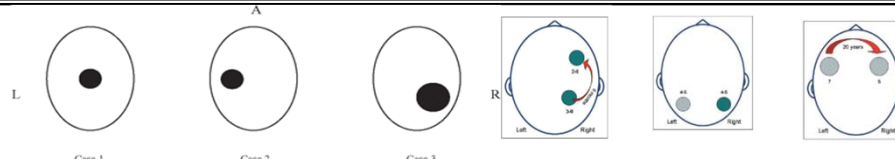
* Ice-pick pains; jabs and jolts; needle-in-the-eye syndrome; ophthalmodynia periodica; sharp short-lived head pain.



4.8 Nummular headache

- A. Continuous or intermittent ~~mild to moderate~~ head pain fulfilling criterion B
- B. Felt exclusively in an area of the scalp, with **all** of the following four characteristics:
1. sharply contoured
 2. fixed in size and shape
 3. round or elliptical
 4. **1**–6 cm in diameter
- C. Not better accounted for by another ICHD-III diagnosis.

* Coin-shaped headache



4.9 Hypnic headache

- A. Recurrent ~~dull~~ headache attacks fulfilling criteria B-E
- B. Developing only during sleep, and causing wakening
- C. Occurring on ≥ 10 days per month for >3 months
- D. Lasting ≥ 15 minutes and for up to 4 hours after waking
~~— first occurs after age of 50 years~~
- E. No cranial autonomic symptoms or restlessness
- F. Not better accounted for by another ICHD-III diagnosis.

* Hypnic headache syndrome; 'alarm clock' headache.

New daily persistent headache

ICHD-2 code 4.8

- A. Headache that, within 3 days of onset, fulfils criteria B-D
- B. Headache is present daily, and is unremitting, for >3 months
- ~~C. At least two of the following pain characteristics:
 - 1. ~~bilateral location~~
 - 2. ~~pressing/tightening (non-pulsating) quality~~
 - 3. ~~mild or moderate intensity~~
 - 4. ~~not aggravated by routine physical activity such as walking or climbing~~~~
- ~~D. Both of the following:
 - 1. ~~no more than one of photophobia, phonophobia or mild nausea~~
 - 2. ~~neither moderate or severe nausea nor vomiting~~~~
- E. Not attributed to another disorder

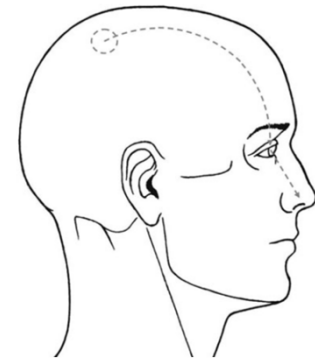
ICHD-3 (beta) code 4.10

- Persistent headache fulfilling criteria B and C
- Distinct and clearly remembered onset, with pain becoming continuous and unremitting within 24 hours
- Present for >3 months
- Not better accounted for by another ICHD-III diagnosis..

Of note, this is the only headache that “onset should be remembered”

A4.11 Epicrania fugax

- A. Recurrent stabbing head pain attacks lasting 1–10 seconds, fulfilling criterion B
- B. The pain is felt to move across the surface of one hemicranium in a linear or zig-zag trajectory, commencing and terminating in the territories of different nerves
- C. Not better accounted for by another ICHD-III diagnosis.



Publication numbers: increasing, but slow...

Numbers of publications in PubMed		
	Before 2004	2004-2013
4.1 Primary cough headache	39	41
4.2 Primary exercise headache	44	31
4.3 Primary headache associated with sexual activity	22	48
4.4 Primary thunderclap headache	51	152
4.5 Cold-stimulus headache	14	7
4.6 External-pressure headache	2	3
4.7 Primary stabbing headache	26	39
4.8 Nummular Headache	3	53
4.9 Hypnic headache	38	82
4.10 New daily persistent headache (NDPH)	29	91

< 2 fold increase

Working group of Chapter 4

Other primary headache disorders

Shuu-Jiun Wang, Taiwan

Anne Ducros, France

Stefan Evers, Germany

Jong-Ling Fuh, Taiwan

Aynur Özge, Turkey

Juan A. Pareja, Spain

Julio Pascual, Spain

Mario Peres, Brazil

William Young, USA

Sheng-Yuan Yu, China.